

# STORIEL

AMGUEDDFA    ORIEL    CAFFI    SIOP  
MUSEUM    GALLERY    CAFE    SHOP

# Welcome to Storiel



Here is our door. We are open 11am—5pm  
Tuesday to Saturday.



There is a public playground next to Storiell that  
can sometimes be noisy on arrival.

# STORIEL

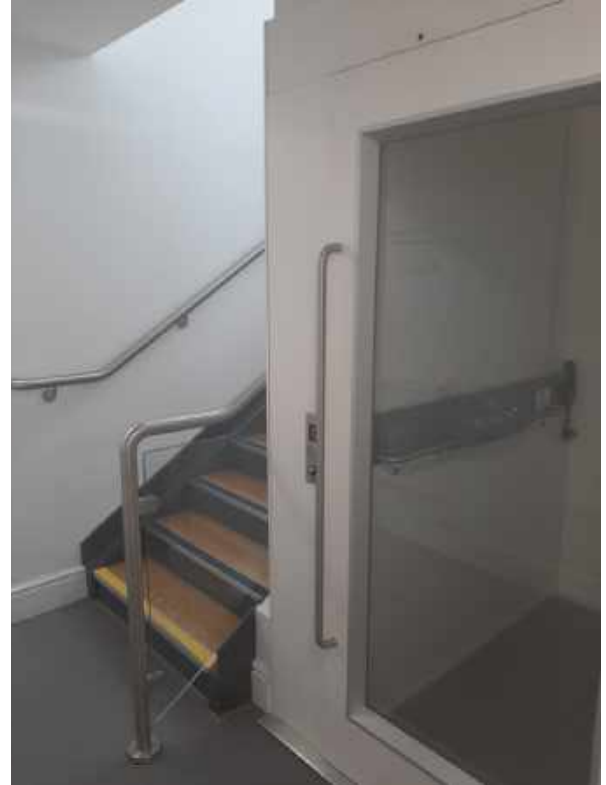
AMGUEDDFA ORIEL CAFFI SIOP  
MUSEUM GALLERY CAFE SHOP

Here is the reception. You don't pay to come to Storiel– so just explore!

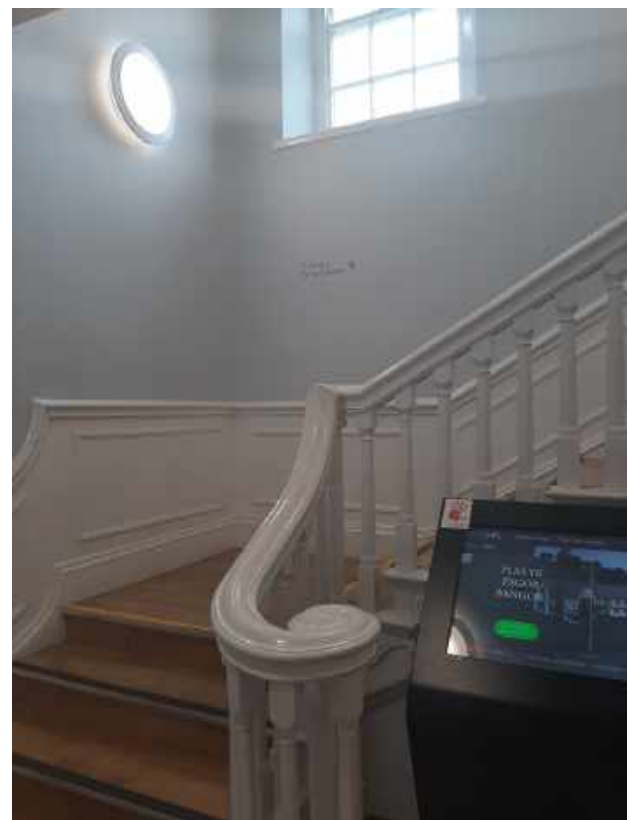
You can ask for help here.



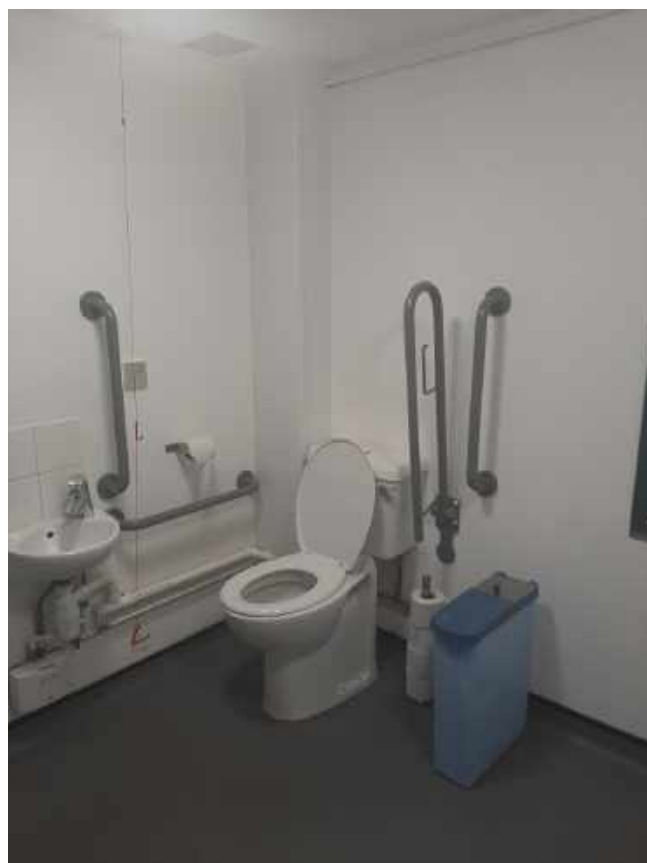
## We have lifts:



## And stairs:



We have toilets– some on the ground floor and some on the first floor.



There are automatic hand dryers in all of our toilets. They can activate if you accidentally brush past them. They all have isolater switches if you want to turn them off.

We have room to change babies' nappies.



Some areas have dehumidifiers/air conditioning to keep the air nice and dry, but they do make a humming noise. If you don't like the noise, ask a member of staff to switch them off, they'll be happy to help!



Because this is a very old Building, some of the floorboards upstairs creak as you walk.

We have Art Galleries where you can sit and look at the Art. The Art changes every 8-12 weeks so you can see something different every visit.

Sometimes there might be statues in the middle of the floor.



You might notice a temperature change as you walk between galleries—this is the air conditioning—the collection needs to be kept at a certain temperature.



When you walk from the Art Gallery to the Museum, it can seem a bit dark. Our artefacts in this room don't like a lot of light. The ceiling in here is a bit lower, too.



Most of the items you will see are just for looking at, but there are some things to play with– here they are!



If you see me,  
you can play  
with the item!



Some galleries have interactive TV screens with short videos. All videos are less than 90 seconds and are not loud. Some videos are in Welsh and some in English.



If you hear a loud bell, you need to follow the green signs and go to the car park outside. There is no need to run.



The galleries and museum have strong white doors to keep our Art and Artefacts safe. If a fire bell rings these doors will close by themselves, but don't worry, you can still get out through them.



We have a café by the reception. Sometimes in the morning there is a lot of cooking smells and sometimes at the end of the afternoon there is a cleaning smell.

At lunch time when the café is busy there is a lot of noise. This can carry into the shop.



If you don't like the noise or have bought your own snack, you can use the quiet space in room 1.



Because it is free to come to in to Storiel we have donation boxes to raise money to help us look after our Art and Artefacts.





Thanks for  
visiting!

